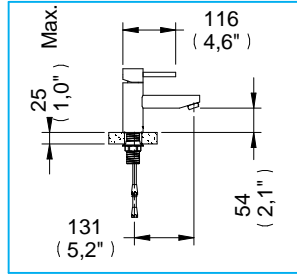
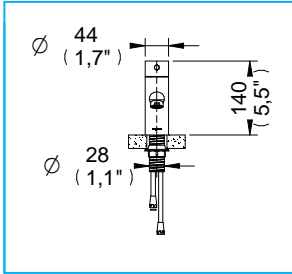


# Monomando Spacio para Lavabo con Desagüe de Rejilla / Spacio Single Control Lavatory With Grid Drain



Medidas Referenciales / Estimated Dimensions, Acot.mm.(pulg) / Dim.mm.(in)

## Características y Datos Técnicos / Characteristics and Technical Details

Cartucho Cerámico para Monomando

Ceramic Cartridge

**Material:**  
Latón

**Material:**  
Brass

**Conexión:**  
½" -14 NPSM

**Inlet Thread:**  
½" -14 NPSM

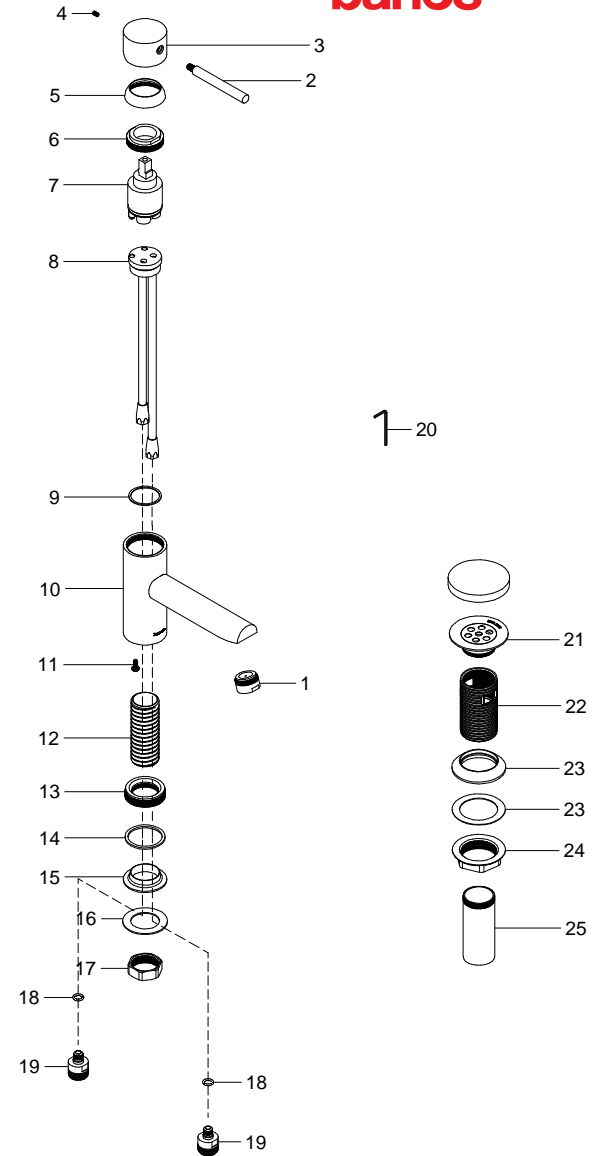
**Presión de Trabajo:**  
Pmin= 1,0 kg/cm<sup>2</sup> (14,22 PSI)  
Pmax= 6,0 kg/cm<sup>2</sup> (85,34 PSI)

**Working Pressure:**  
Pmin= 1,0 kg/cm<sup>2</sup> (14,22 PSI)  
Pmax= 6,0 kg/cm<sup>2</sup> (85,34 PSI)

## Despiece / Components

Mod.	Descripción	Mod.	Description
1	Ps2-952 Aireador	1	Ps2-952 Aerator
2	Pr2-1628 Palanca Maneral	2	Pr2-1628 Lever-Handle
3	Pr2-1627 Cuerpo Maneral	3	Pr2-1627 Handle Body
4	Pr7-107 Opresor Allen 8-32 UNC-2A X ¼"	4	Pr7-107 8-32 UNC-2A X ¼" Hex Setscrew
5	Pr2-612 Chapetón 1-1/8"	5	Pr2-612 1-1/8" Escutcheon
6	Pr2-613 Tuerca 1-½" 24 UNS-2A	6	Pr2-613 1-½" 24 UNS-2A Nut
7	Ps5-450 Cartucho para Monomando	7	Ps5-450 Single Control Cartridge
8	Ps2-1172 Inserto Cartucho de 35mm Soldado	8	Ps2-1172 35 mm Insert Cartridge
9	Pr2-2202 Empaq. p/ Monoman. con Inserto	9	Pr2-2202 Gasket with Insert
10	Pr2-2094 Cuerpo Monomando	10	Pr2-2094 Single Control Body
11	Pr3-1063 Tornillo Autorroscante 8-32	11	Pr3-1063 8-32 Self-tapping Screw
12	Pr2-1459 Espárrago Grande Salida	12	Pr2-1459 Spout Stud
13	Pr2-1633 Tuerca Base Monomando	13	Pr2-1633 Base Nut
14	Pr2-1159 Empaque Base	14	Pr2-1159 Base Gasket
15	Pr2-1473 Separador Cuerpo Central	15	Pr2-1473 Central Body Spreader
16	Pr2-1472 Rondana	16	Pr2-1472 Washer
17	Pr2-1471 Tuerca Espárrago Salida	17	Pr2-1471 Spout Stud Nut
18	Pr2-253 O'ring 2-011	18	Pr2-253 O'ring 2-011
19	Pr2-1653 Tuerca Conector Alimentador	19	Pr2-1653 Feeding Coupling Nut
20	Pr5-742 Llave Allen 2 mm	20	Pr5-742 2 mm Hex Wrench
21	Ps2-1115 Extensión de Contra con Rejilla Proyecta	21	Ps2-1115 Extension to Grid Drain
22	Pr2-1913 Cuerpo Contra c/ Rebosadero	22	Pr2-1913 Drain Body w/Overflow
23	Pr2-1000 Kit Empaque Contras	23	Pr2-1000 Packaging Kit cons
24	Pr2-088 Tuerca Contra Lavabo	24	Pr2-088 Lavatory Drain Nut
25	Pr2-930 Tubo Unión Césped Contra	25	Pr2-930 Lavatory Drain Joint Pipe

\* Los productos ilustrados pueden sufrir cambios sin previo aviso en su aspecto o partes, como resultado de los procesos de mejora continua al que están sujetos, sin implicar mayor responsabilidad de la fábrica.



\* Products depicted here in subject to change without prior notice in their appearance or components as a result of incremental innovation.